

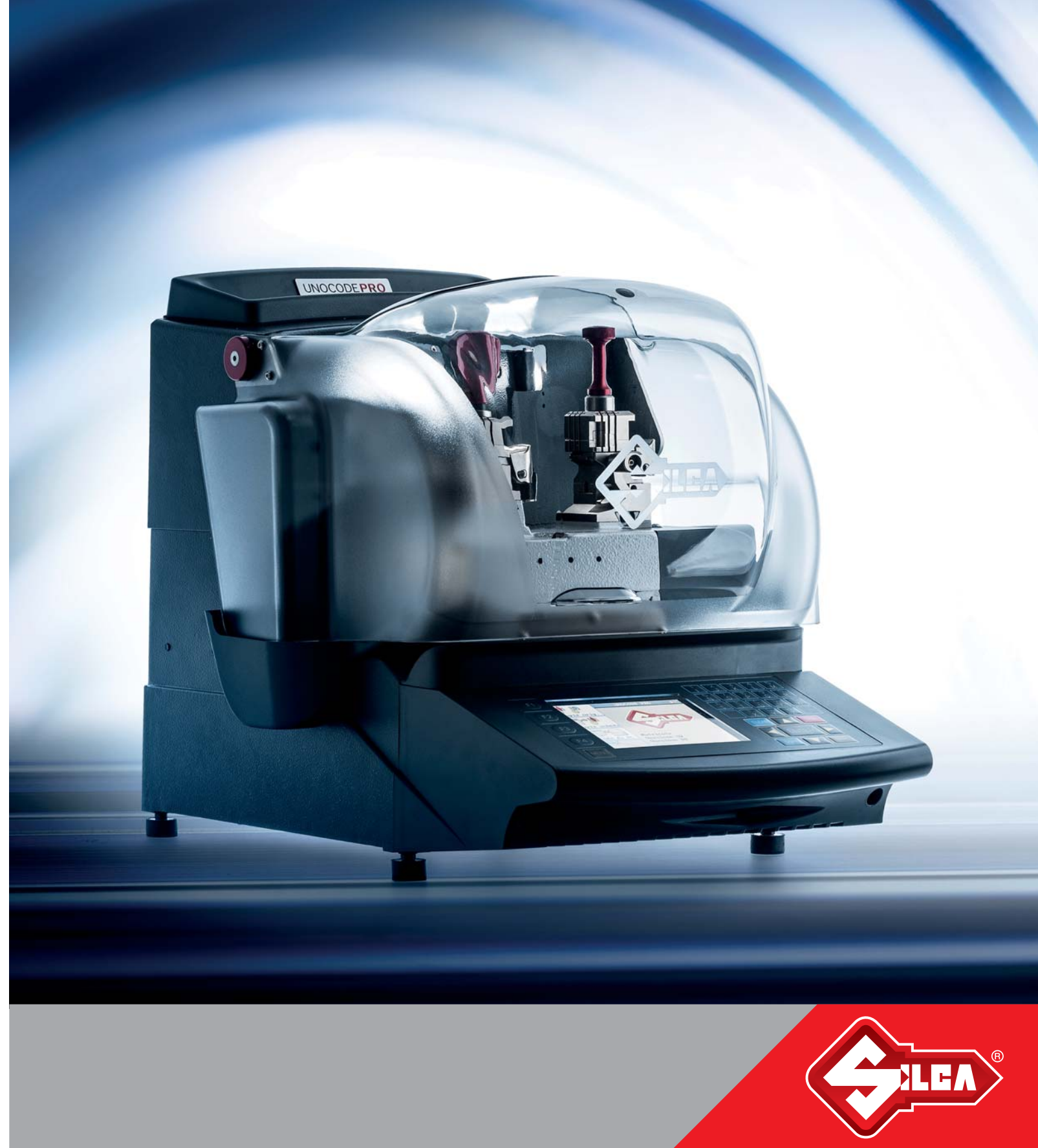


POPW - DEPL UNOCODE PRO - GB

 8 003737 886 109

 Unocode Pro has been designed and manufactured in conformity with CE mark European standards.

Technical Data	
Power supply	230V - 50Hz, 100V - 50/60Hz
Motor	single phase, one speed
Standard cutter	U01W in AlCrN coated hard metal
Cutter speed	50Hz - 1700 rpm (+/- 10%)
Movements	on 2 axes with ball screws activated by step motors, on rectified roller guides. Possibility to add a 3 rd axis to activate the optional tilting and rotating clamps.
Carriage runs	axis X: 57 mm, axis Y: 32 mm
Clamp	V100 universal four-sided, nickel plated
Dimensions	width: 450 mm depth: 600 mm height: 440 mm (with raised shield: 680 mm)
Weight	38 Kg



Unocode Pro - Plus



Faster cutting cycle



Long-lasting cutter



Optimized four-sided clamps



Resistant hardware and finishing



User-friendly software



Maintenance menu



Cut keys counter

UNOCODE PRO



Unocode Pro

Unocode Pro is the professional key cutting machine; combining state-of-the-art technology, precise results and ease of use

Unocode Pro is the top electronic key cutting machine for decoding and cutting either by code or from original flat cylinder, vehicle keys and cruciform keys.

Designed for experienced locksmiths and professional key cutters, Unocode Pro wraps together outstanding performance, ease of use and high-quality components. The machine can work both in stand-alone mode or with a PC connection that enables you to access the largest key database available on the market via user-friendly software.

Unocode Pro

Unocode Pro is the top electronic key cutting machine for flat cylinder and vehicle keys and cruciform keys.

* Keys cut with specific optional accessories.

Faster cutting cycle
Unocode Pro features new pulley ratios, delivering more torque to the cutter. The faster carriage movements reduce cycle time considerably compared with the Unocode 399 Evo (see box below).

Adjustable cutting speed
Once you have selected the cutting card to use, you can modify the cutting speed by 30%. In this way, you can speed up work queues or slow down to limit cutter wear.

Long-lasting cutter
The AlCrN (aluminum chromium nitride) coating keeps the cutter temperature lower whilst the optimized cutter speed ensures a longer life.

Quiet and stable
The reinforced structure of the machine reduces vibrations, making Unocode Pro stable and quiet.

Optimized clamps
The four-sided, nickel plated clamps feature a quick-release system for easier rotation and an ergonomic handle. They are rustproof and less prone to wear.

Clean and orderly work station
The new cutter sharpening means swarf is left only in a small area and collected in the incorporated pull-out tray on the side of the machine.

Improved hardware
All exposed screws are made of stainless steel



Nickel plated clamp with quick-release system

for better resistance and a longer life.

Tools and accessories close to hand
On top of the machine there is a utensil tray with non-slip mat to help you keep your work bench neat and tidy and keep all your tools and accessories within easy reach.

Reduced cycle time
Compared with Unocode 399 Evo, cycle time is reduced by:

- 10% for decoding cylinder keys;
- 25-30% for cutting cylinder keys.

Tests have been performed using Silca branded keys with 5 pins.



Large coloured graphic display and new keyboard to access the software integrated in the machine

User-friendly software interface
The software controlling the machine is designed specifically for specialists in the key cutting business and allows you to perform searches by cutting card. A number of useful functions have been added to improve maintenance so

optimizing the use of the machine over time.

USB and RS232 port
The machine is provided with USB and RS232 port for external connectivity.

Graphic display
The machine is equipped with a 5.7" coloured display.



Utensil tray with non-slip mat

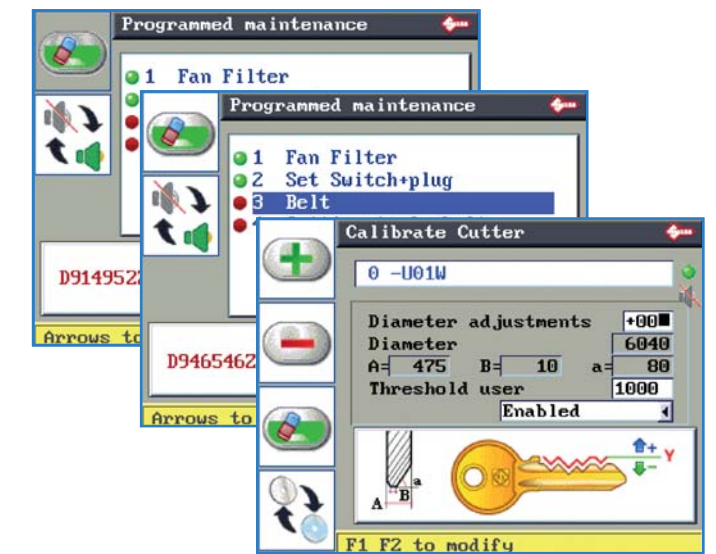


AlCrN coated cutter

New software features

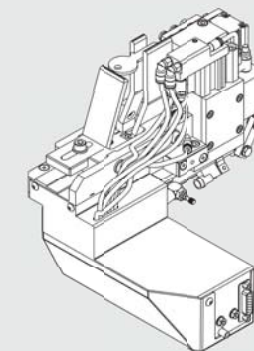
Software management of maintenance
The new maintenance menu, programmed by the installer, advises on maintenance necessary for parts subject to mechanical wear. Depending on the setting, the software advises whether the intervention can be performed by the user (e.g. changing the belt) or by the installer (e.g. changing the cutter shaft). Activated parameters are marked by a green light, whilst components that need maintenance or replacement are signalled by a red light. **Please refer to your installer to activate this function.**

Cut keys counter
The machine keeps a running total of keys cut with each individual cutter, saving the need to manually make a note at each operation. The software advises the operator on cutter use and suggests when the cutter needs replacement. The notice is activated when a pre-set level of keys cut is reached. The level is adjusted by the users according to their use of the machine.

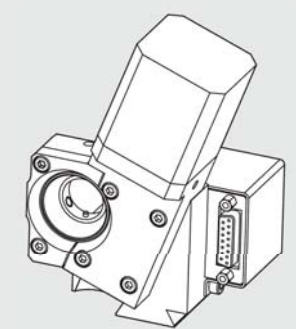


Optional tools and accessories

- The **automatic feeder** saves time and effort in cutting single sided flat keys (figure on the left).
- The optional **rotating V1 clamp** enables you to operate also on the third axis for angled cuts (figure on the right). Together with other dedicated accessories, it allows you to duplicate Abloy®, Abus®, Ava®-Chubb®, Chubb®, Ford® and Luma® type keys.



Automatic feeder



Rotating V1 clamp

© are registered trademarks.

Further optional accessories available. For more details, visit our website.

In compliance with current regulations relating to technical property, we hereby state that the trade marks or trade names mentioned in this document are the exclusive property of the registered manufacturer of tools and users. Such trade marks or trade names are mentioned only for the purposes of information so that any lack of which our keys can be easily identified. This document is reserved exclusively for professional key cutters who use Silca products. All information and illustrations in this document are for guidance only. Silca reserves the right to alter products designs, dimensions or info to improve the products quality. The contents of this document are fully protected by Copyright and may not be copied or reproduced in any form, without written permission from Silca S.p.A. Any controversy shall be settled by the Courts of Justice where the company has its headquarters, with express exclusion of any other court.